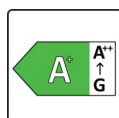


FIREPLACE KIT SYSTEM FROM BRUNNER



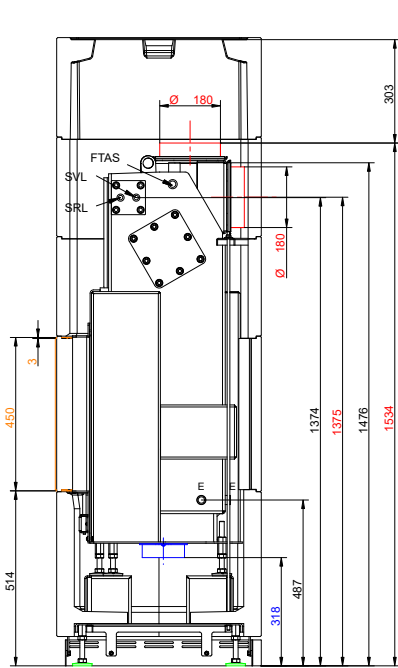
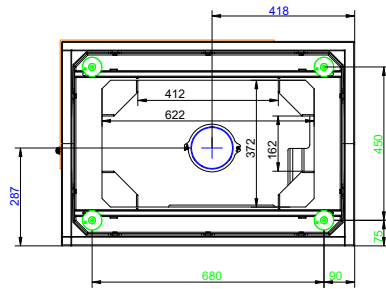
BSK 12.1 with Corner fireplace water- bearing 42-57-30

State: 2025-10-13

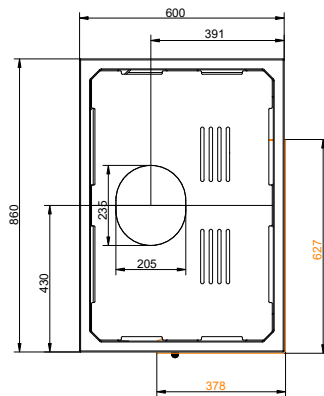
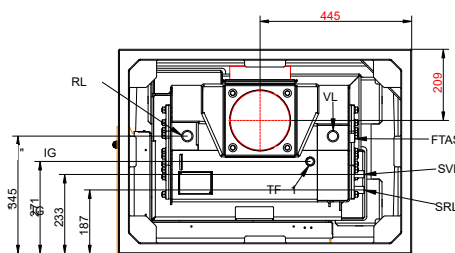
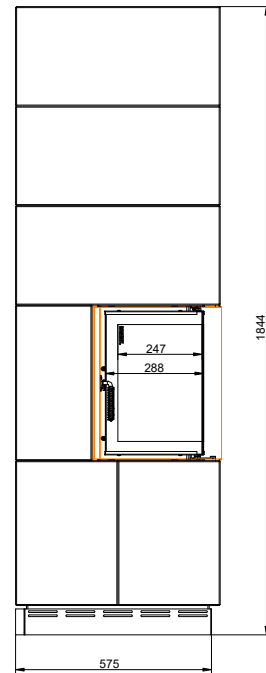
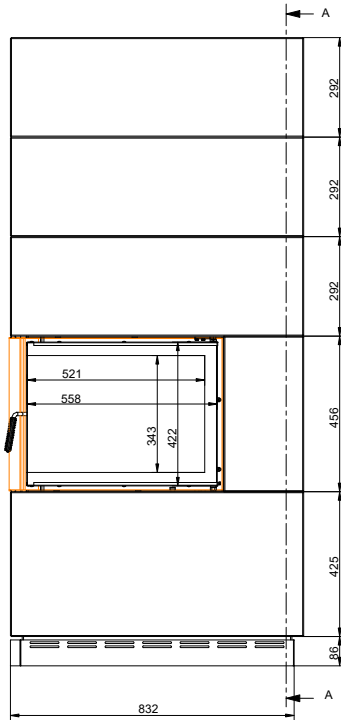


BRUNNER®

Dimension sheets - BSK 12.1 with Corner fireplace water-bearing 42-57-30



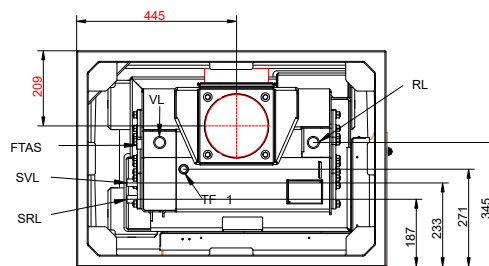
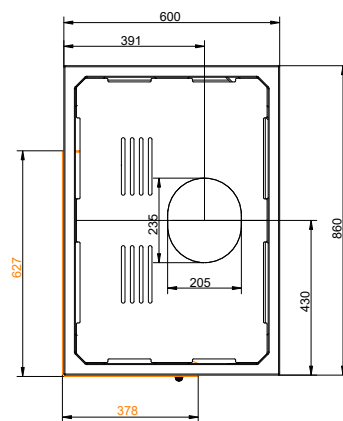
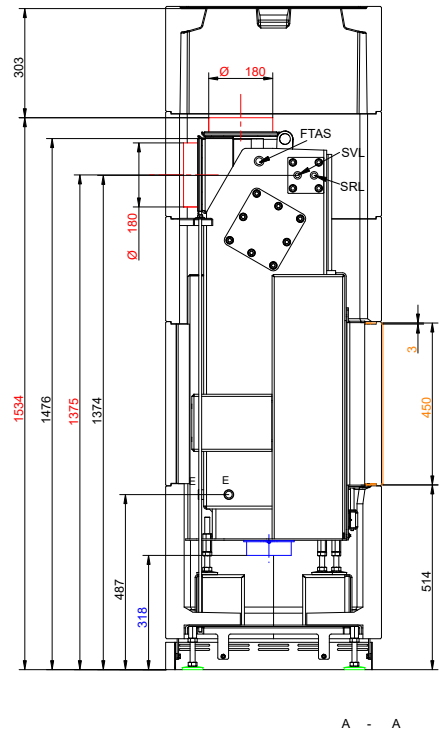
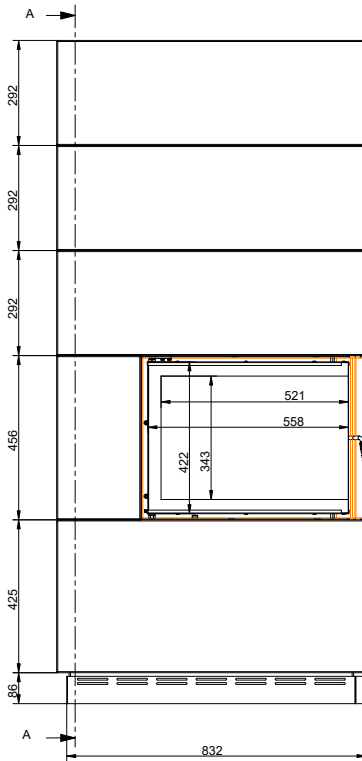
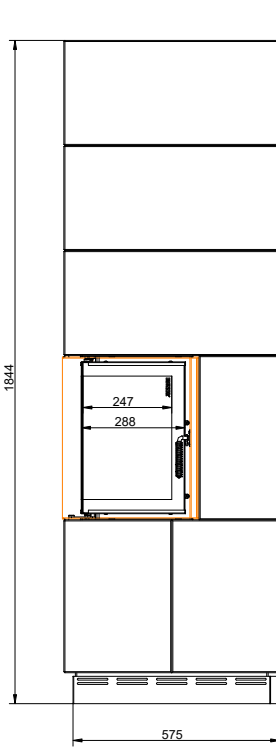
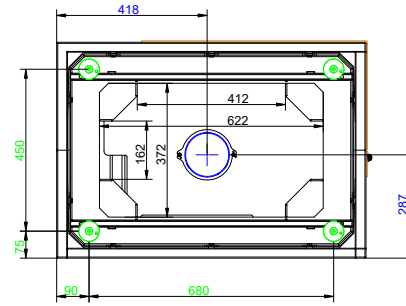
A - A



- VL supply 1"ext. th.
- RL return boiler 1"ext.th.
- E drain 1/2"int. th.
- SVL supply cooling pipe outlet ext.th.
- SRL return cooling pipe outlet 1/2"ext.th.
- FTAS socket for thermal safety sensor int.th.
- TF socket 1/2" for sensor int.th.

... left

Dimension sheets - BSK 12.1 with Corner fireplace water-bearing 42-57-30



- VL supply 1"ext. th.
- RL return boiler 1"ext.th.
- E drain 1/2"int. th.
- SVL supply cooling pipe outlet ext.th.
- SRL return cooling pipe outlet 1/2"ext.th.
- FTAS socket for thermal safety sensor int.th.
- TF socket 1/2" for sensor int.th.

... right

We suggest for CAD planning Palette CAD. Permanent updated drawings: www.brunner.de

Frames/ flue gas outlet connection/ combustion air supply connection/ front variants/ support bearing are marked in color.

Planning and installation - BSK 12.1 with Corner fireplace water-bearing 42-57-30

Series status	04.2	04.2
Tested according to	EN 13229 W	EN 13229 W
Values measured at	Practical avg.	Rated power

Data for functional demonstration

Rated heat power	kW	-	8
Room heating power	kW	-	3.5
Water heating power	kW	-	4.5
Fire wood volume	kg/h	5.0	2.5
Flue gas mass flow	g/s	18	8
Flue gas temperature	°C	220	175
Necessary supply pressure ¹⁾	Pa	12	12
Combustion air consumption	m ³ /h	45	25
Combustion air connection Ø	mm	125	125

Cladding components ²⁾

Foot print (W x D)	mm	860 x 600	860 x 600
Overall height	mm	1844	1844
Height of extension ring	mm	292	292

Minimal distances

to mounting wall	cm	5	5
to mounting wall with heat protection panels	cm	0	0
to combustible mounting wall	cm	10	10
to combustible mounting wall with heat protection panels	cm	5	5
from top of fireplace to ceiling	cm	40	40

Cross-section of gratings ³⁾

exhaust warm air	cm ²	906	906
Recirculation air	cm ²	1264	1264

Minimum distances in front of the combustion chamber, glass ceramic / glass ceramic coated (GKB)

for combustible parts	cm	≥ 120 / ≥ 80	≥ 120 / ≥ 80
-----------------------	----	--------------	--------------

Weight

Total weight	kg	551	551
--------------	----	-----	-----

Meets requirement/limit values for:

EU / Germany	Ökodesign / 1. BImSchV (Stufe 2)
--------------	----------------------------------

- 1) Damper flap recommended
- 2) Quality features of the cladding components in concrete look (fair-faced concrete class 2-3)

Dimensional tolerances of the casting mold parts

Straightness: +/- 2 mm/m

Length/width/thickness: +/- 2 mm

Squareness: +/- 2 mm

Flatness: +/- 2,5 mm

Surface to visible side

Textur: closed and largely uniform; repair areas with color changes and hairline cracks permissible.

Porosity: max. three holes with diameter <10 mm and depth <10 mm (reference area 100x100 mm).

Colour shade: uniform, large-area light/dark discolouration and cement haze permissible; no rust and dirt spots as well as different bulk layers.

Note: deviations in color tone (e.g. extension rings) can be adjusted by applying a glaze-like paint (our recommendation: DecoLasur Matt tinted in the colour shade Schiefer16, Caparol).

With the BRUNNER revision set (Art. No. 900300), touch-up work can be carried out on the cladding components.

- 3) Existing convection air openings. If the construction differs from the supplied system kit (e.g. construction up to the ceiling or closed construction), the information in the data sheet is decisive for carrying out the cross section of the convection air openings.