

FIREPLACE KIT SYSTEM FROM BRUNNER



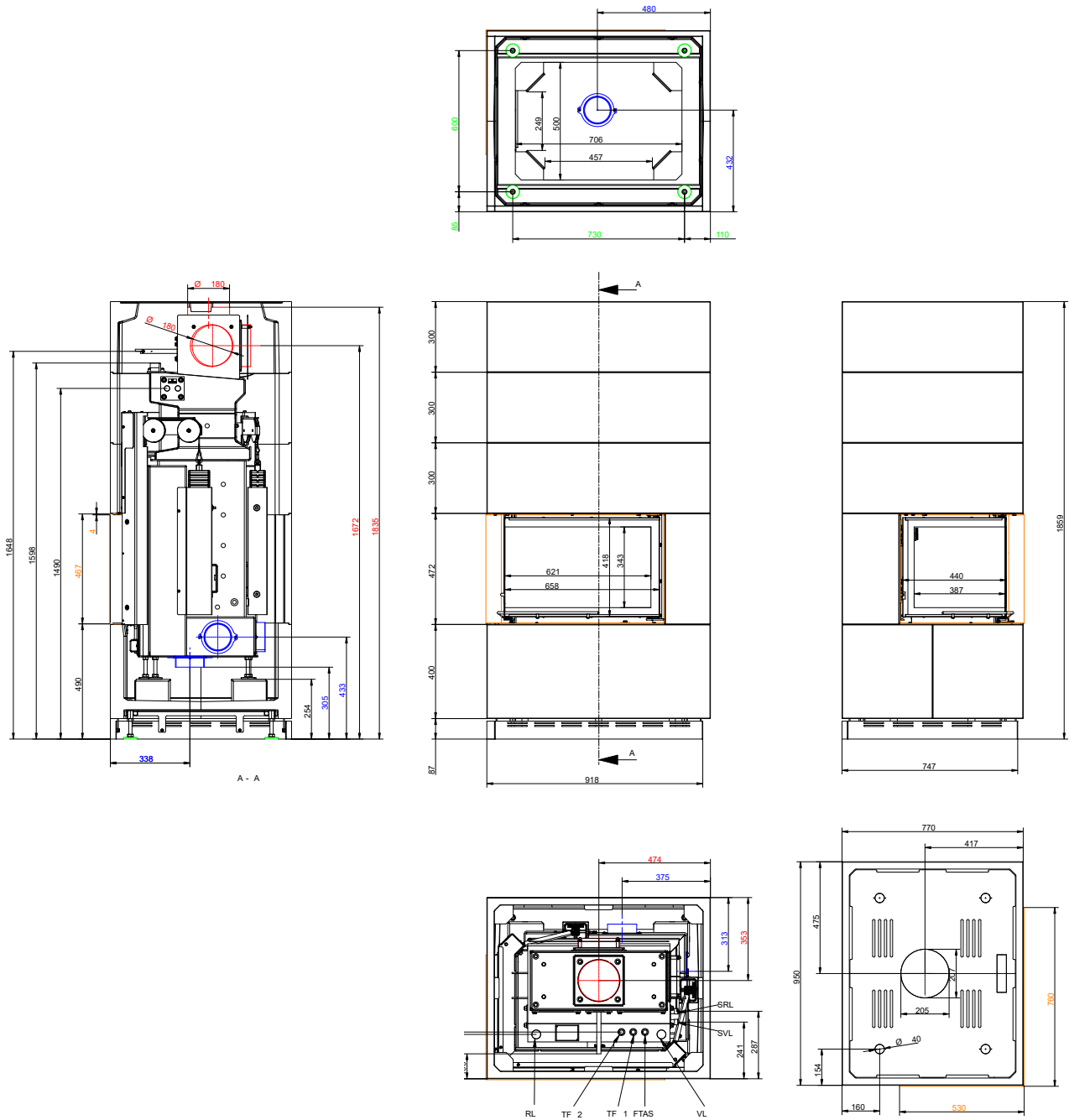
BSK 02.1 with Kamin- Kessel Eck 45-67-44

State: 2025-10-13



BRUNNER[®]

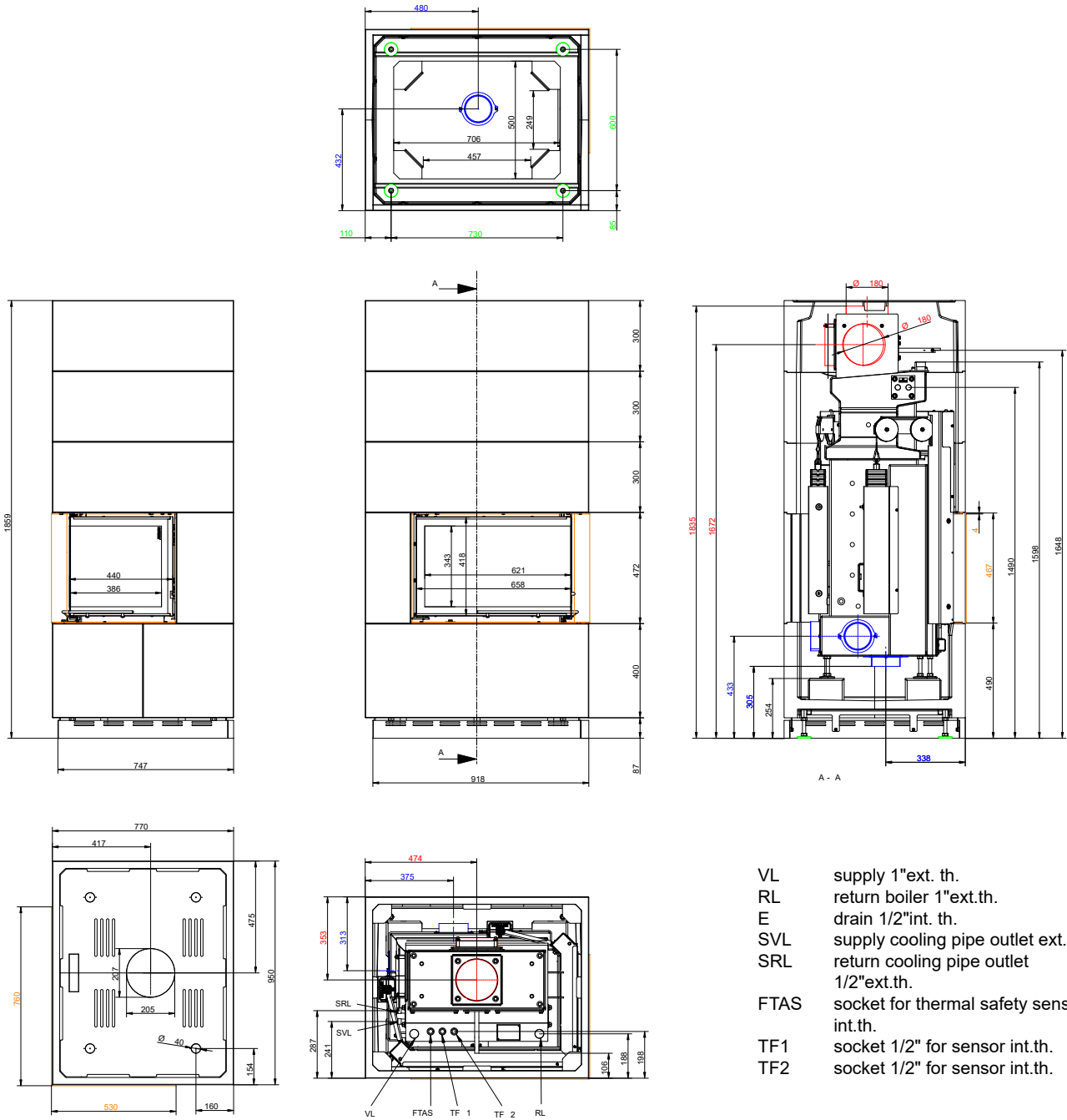
Dimension sheets - BSK 02.1 with Kamin-Kessel Eck 45-67-44



- VL supply 1"ext. th.
- RL return boiler 1"ext.th.
- E drain 1/2"int. th.
- SVL supply cooling pipe outlet ext.th.
- SRL return cooling pipe outlet 1/2"ext.th.
- FTAS socket for thermal safety sensor int.th.
- TF1 socket 1/2" for sensor int.th.
- TF2 socket 1/2" for sensor int.th.

... left

Dimension sheets - BSK 02.1 with Kamin-Kessel Eck 45-67-44



- VL supply 1" ext. th.
- RL return boiler 1" ext.th.
- E drain 1/2" int. th.
- SVL supply cooling pipe outlet ext.th.
- SRL return cooling pipe outlet 1/2" ext.th.
- FTAS socket for thermal safety sensor int.th.
- TF1 socket 1/2" for sensor int.th.
- TF2 socket 1/2" for sensor int.th.

... right

We suggest for CAD planning Palette CAD. Permanent updated drawings: www.brunner.de
 Frames/ flue gas outlet connection/ combustion air supply connection/ front variants/ support bearing are marked in color.

Planning and installation - BSK 02.1 with Kamin-Kessel Eck 45-67-44

Series status		04.2	04.2
Tested according to		EN 13229 W	EN 13229 W
Values measured at		Rated power	Practical avg.
Data for functional demonstration			
Rated heat power	kW	12	-
Room heating power	kW	5.0	-
Water heating power	kW	7.0	-
Fire wood volume	kg/h	3.6	5.7
Flue gas mass flow	g/s	12.5	19.5
Flue gas temperature	°C	155	200
Necessary supply pressure	Pa	12	12
Combustion air consumption	m³/h	40	50
Combustion air connection Ø	mm	125	125
Cladding components ¹⁾			
Foot print (W x D)	mm	950 x 770	950 x 770
Overall height	mm	1859	1859
Height of extension ring	mm	300	300
Minimal distances			
to mounting wall	cm	5	5
to mounting wall with heat protection panels	cm	0	0
to combustible mounting wall	cm	10	10
to combustible mounting wall with heat protection panels	cm	5	5
from top of fireplace to ceiling	cm	40	40
Cross-section of gratings ²⁾			
exhaust warm air	cm²	965	965
Recirculation air	cm²	900	900
Minimum distances in front of the combustion chamber, glass ceramic / glass ceramic coated (GKB)			
for combustible parts	cm	≥ 120 / ≥ 80	≥ 120 / ≥ 80
Weight			
Total weight	kg	798	798
Meets requirement/limit values for:			
EU / Germany		Ökodesign / 1. BImSchV (Stufe 2)	

1) Quality features of the cladding components in concrete look (fair-faced concrete class 2-3)

Dimensional tolerances of the casting mold parts

Straightness: +/- 2 mm/m

Length/width/thickness: +/- 2 mm

Squareness: +/- 2 mm

Flatness: +/- 2,5 mm

Surface to visible side

Textur: closed and largely uniform; repair areas with color changes and hairline cracks permissible.

Porosity: max. three holes with diameter <10 mm and depth <10 mm (reference area 100x100 mm).

Colour shade: uniform, large-area light/dark discolouration and cement haze permissible; no rust and dirt spots as well as different bulk layers.

Note: deviations in color tone (e.g. extension rings) can be adjusted by applying a glaze-like paint (our recommendation: DecoLasur Matt tinted in the colour shade Schiefer16, Caparol).

With the BRUNNER revision set (Art. No. 900300), touch-up work can be carried out on the cladding components.

2) Existing convection air openings. If the construction differs from the supplied system kit (e.g. construction up to the ceiling or closed construction), the information in the data sheet is decisive for carrying out the cross section of the convection air openings.